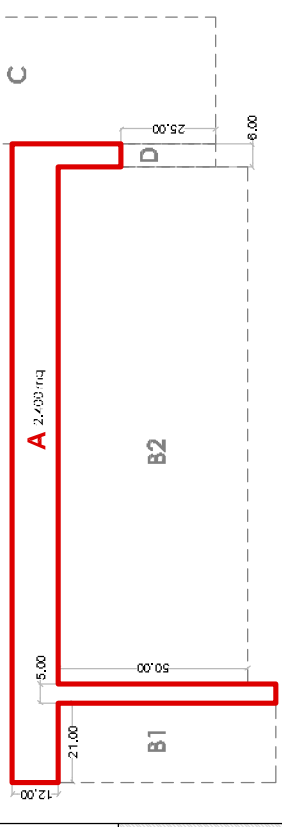


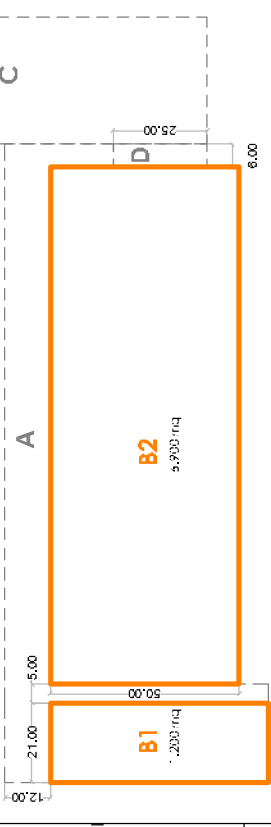
Superficie Territoriale = 14.100 mq

SOTTOZONA C1

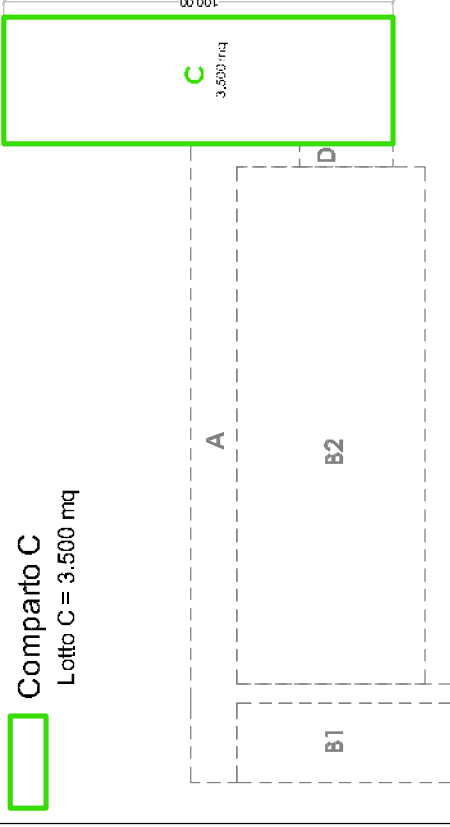
Comparto A
Lotto unico = 2.400 mq



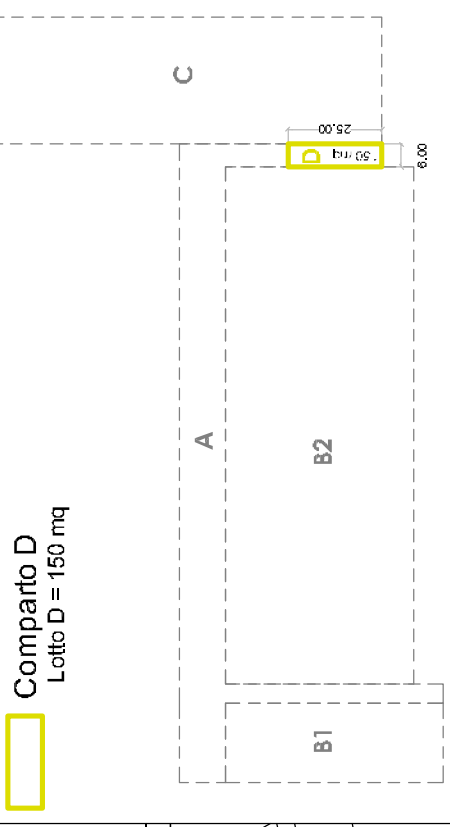
Comparto B Superfici Fondiarie = 8.100 mq
Sup. Permeabile > 25% Sup. Fond.
Lotto B1 = 1.200 mq
Sup. Cop. = esistente (è ammessa la
Ristr. Urb. con Sup. Cop. max=240 mq
e Hmax=6,00 m)
Lotto B2 = 6.900 mq
Sup. Cop. = 1500 mq
Hmax = 6,00 m



Comparto C
Lotto C = 3.500 mq



Comparto D
Lotto D = 150 mq



C1

A 2.400 mq

B2
6.900 mq

B1
1.200 mq

D
150 mq

C
3.500 mq

P2