

ELABORATO

13

INDICE  
UNITA' MINIME DI INTERVENTO  
CHIOSCHI

	STRUTTURA	SIGLA	tot	MODULO	tot	MODULO	tot	MODULO
UMI X	Chiosco Bar 1	R	2	M1	1			
	Chiosco Bar 2	R	4	M1	4	M2	1	M3
	Edicole giornali	E	1	M1	1	M2		
	Edicola fiori	F	2	M1	1	M2		
	Tappeti elastici	TE	1	M1				
	Pista Go Kart	GK	1	M2				
	Cavallini	C	1	M1				
	Trenini	T	1	M2				
	Giostre	G	1	M2				
	Teatro Burattini	TB	1	M2				
UMI Y	Noleggio cicli	NC	1	M1	6	M4		
UMI Z	Padiglione giochi	SG	3	M5				

modulo	forma	dimensioni	h min	h max	piano calpestio	superficie chiusa
M1	modulo quadrato	380 X 380 ML	2.60 ML	3.90 ML	+030	14.44 MQ
M2	modulo rettangolare	380 X 220 ML	2.60 ML	3.20 ML	+030	8.36 MQ
M3	modulo quadrato jolly	160 X 160 ML	2.60 ML		+030	2.56 MQ
M4	modulo rettangolare	280 X 300 ML		1.80 ML	+030	8.40 MQ
M5	modulo rettangolare	410 X 410 ML	2.70 ML	3.60 ML	+030	16.81 MQ

COMUNE DI VIAREGGIO



PIANO DI RECUPERO  
DELLA PINETA DI PONENTE E LEVANTE  
1996

IL SEGRETARIO GENERALE  
(Dr. Alfredo Gualchi)

ELABORATO ALLEGATO

13

Deliberazione C.C.  
n. 70 del 28-10-96

UNITA' MINIME DI INTERVENTO  
CHIOSCHI

PROGETTAZIONE

ARCH. GIOVANNA DE CIECHI

ARCH. GIUSEPPE DE LEO



Giuseppe De Leo

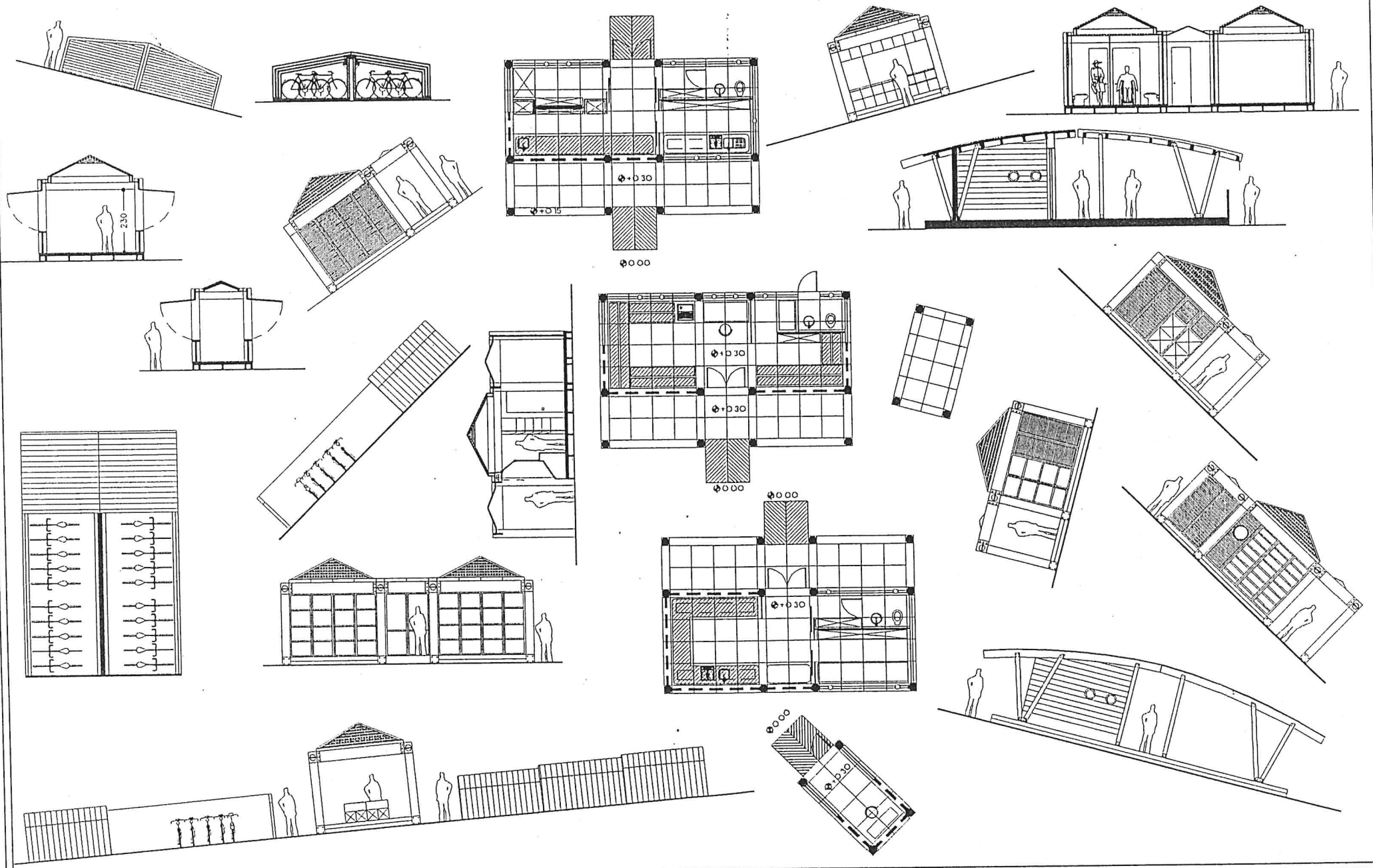
COMUNE DI VIAREGGIO

PIANO DI RECUPERO PINETA DI PONENTE E DI LEVANTE

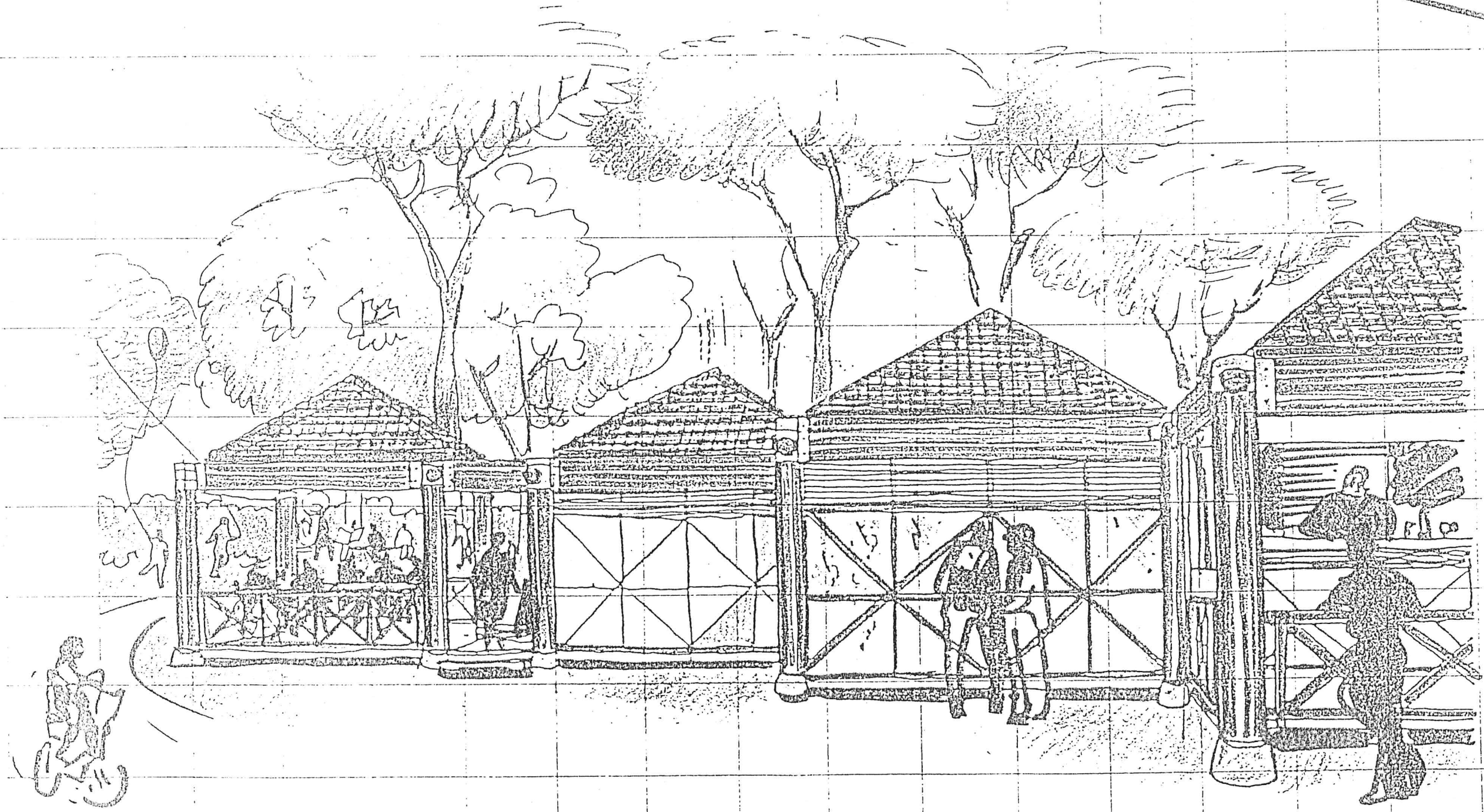
1996

STUDIO R.E.D.S. - ARCHITETTO GIOVANNA DE CIECHI STUDIO AREA - ARCHITETTO GIUSEPPE DE LEO

MODELLI DI RIFERIMENTO PER LE ARCHITETTURE DELLA PINETA



PROGETTO



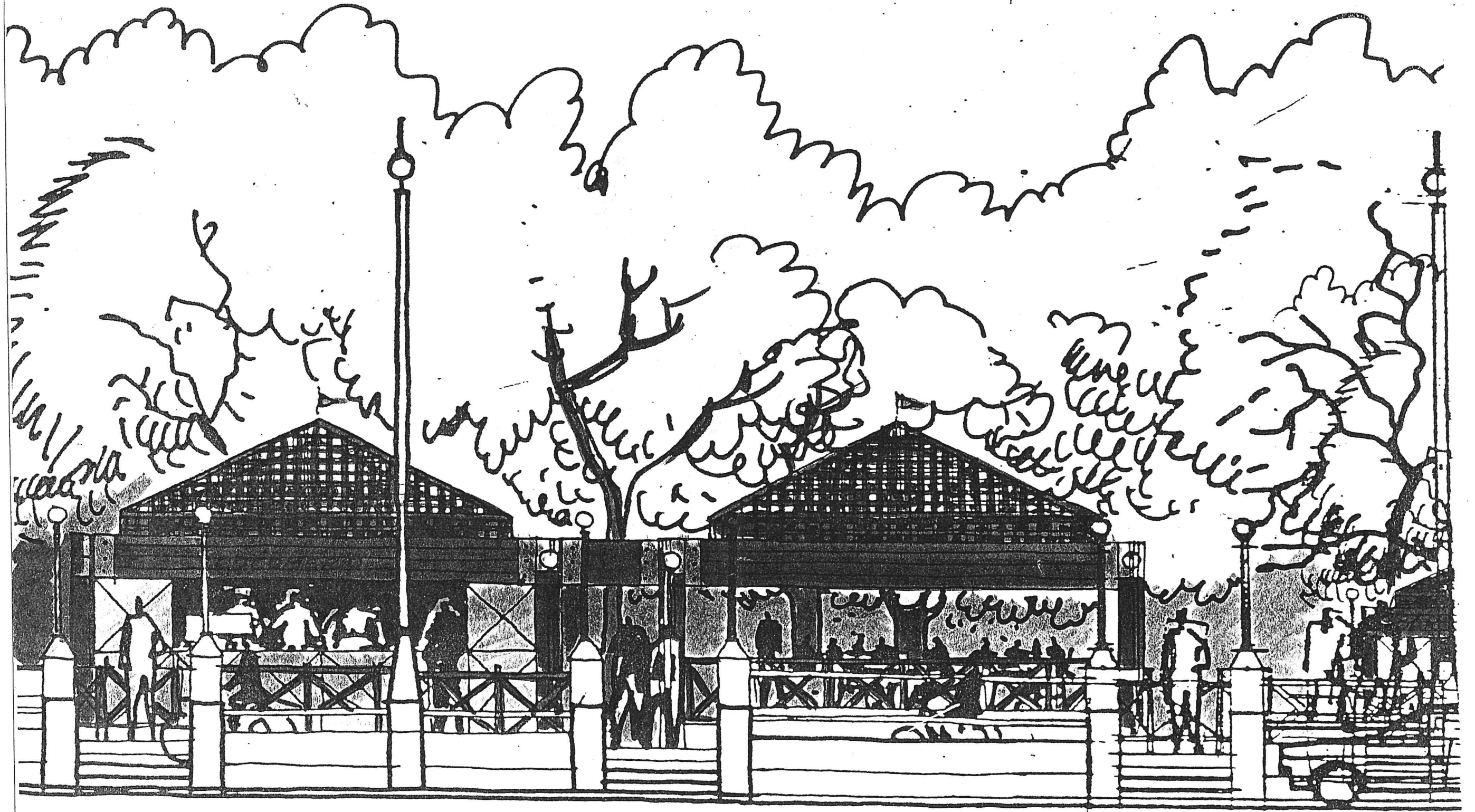
vista prospettica







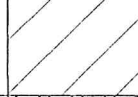

Compass

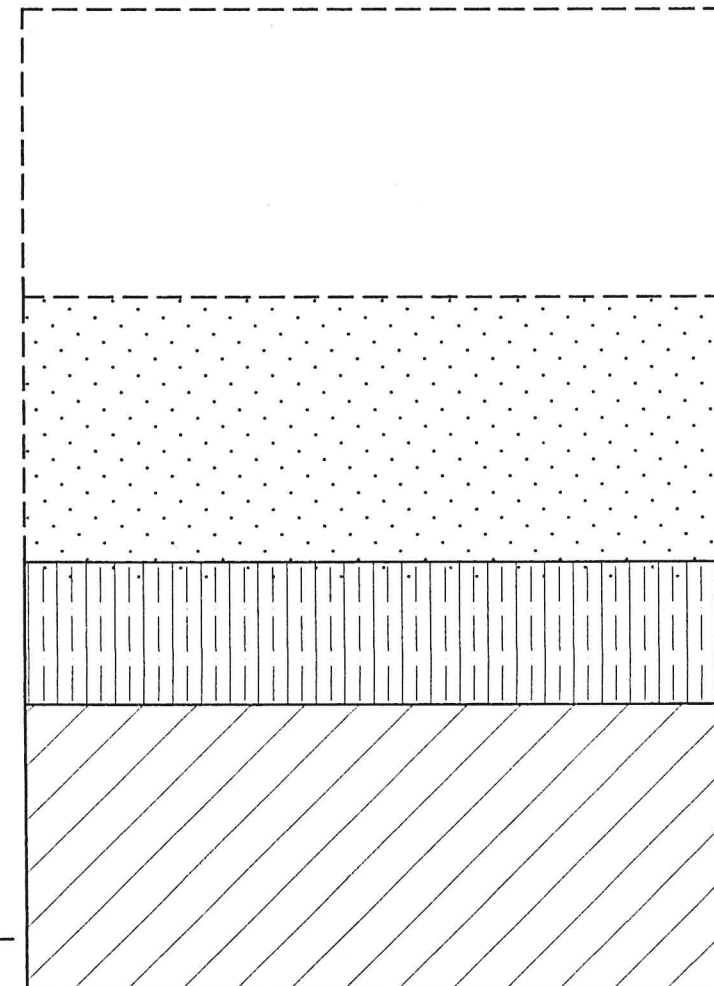
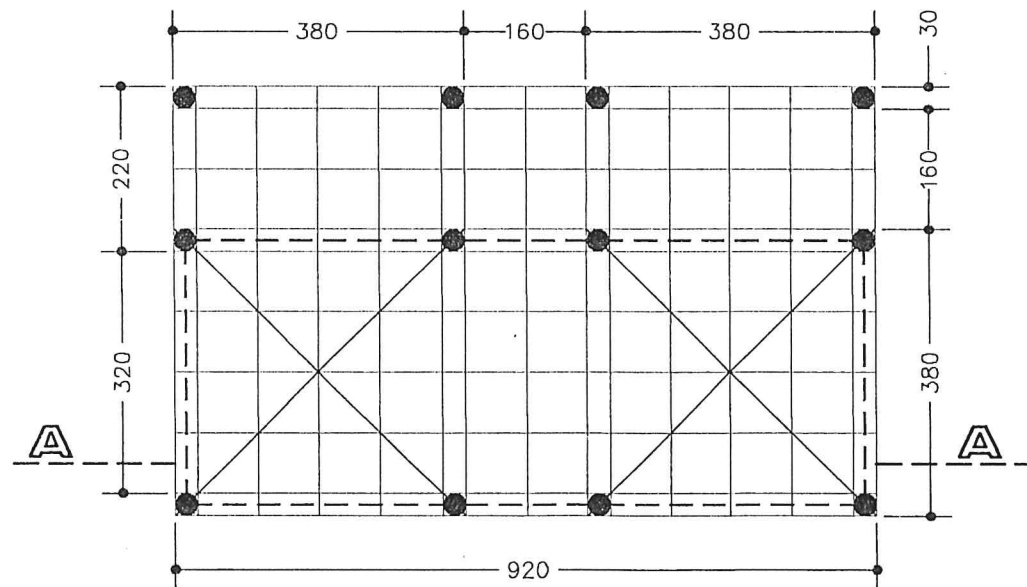
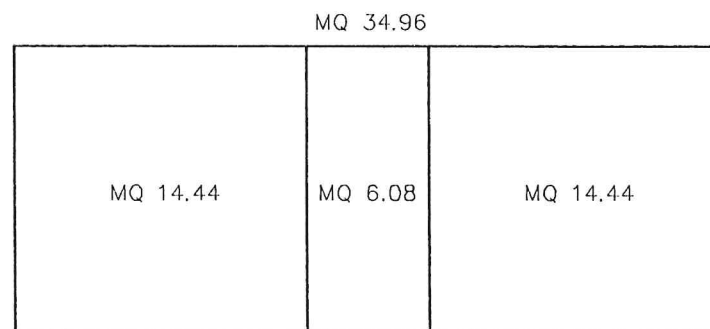
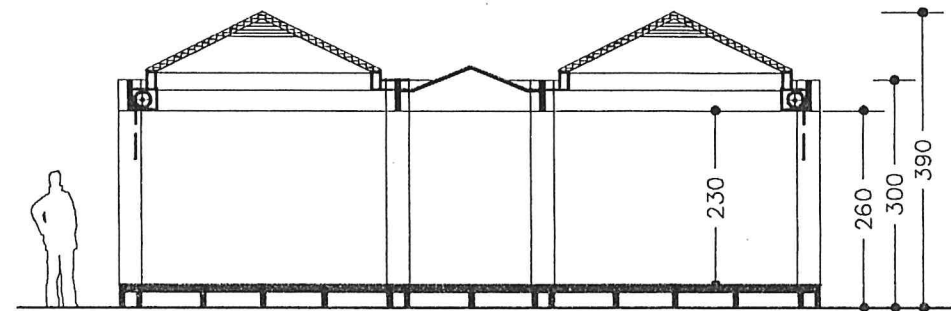




M1	MQ 14.44				
M2	8.36				
M3	2.56				
M4	8.40				
M5	15.58				

CHIOSCO BAR 1

SA		SUPERFICIE APERTA TAVOLI E OMBRELLONI DA MQ 34.96 A MQ 69.92
SP		SUPERFICIE A PORTICO
SMO		SUPERFICIE MODULO OPERATIVO
SS		SUPERFICIE COPERTA E CHIUSA SALA



SA MQ 34.96

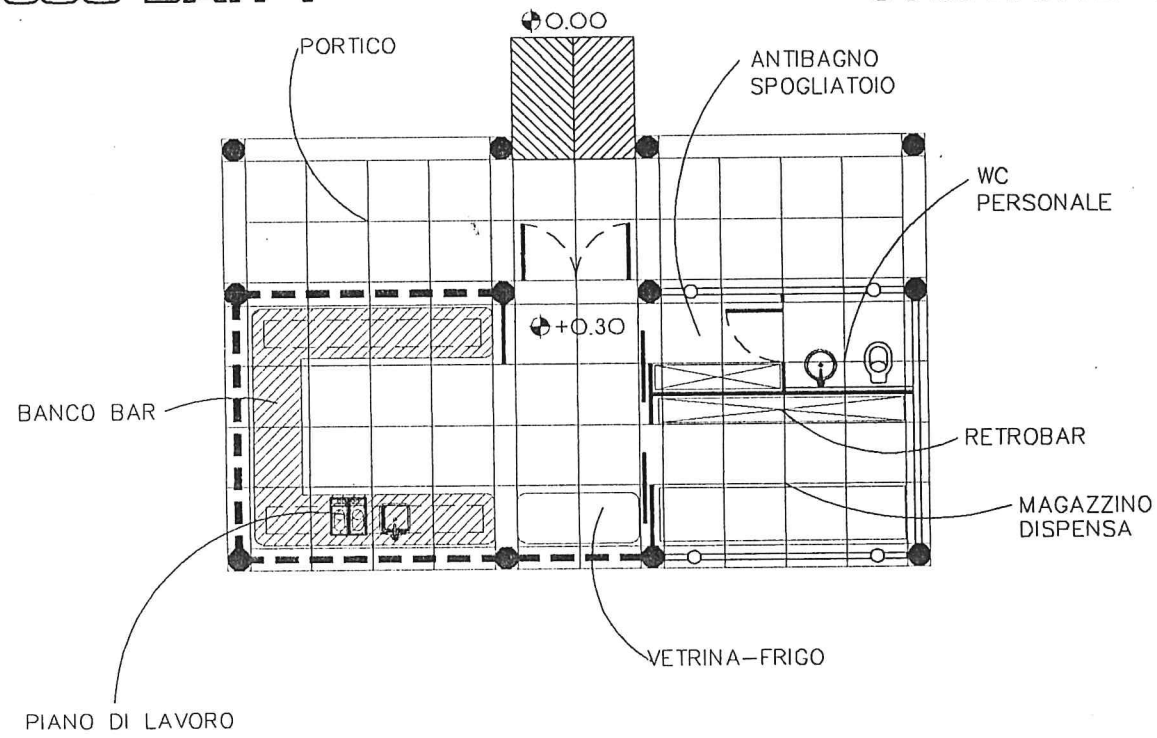
SP MQ 17.48

SMO MQ 34.96

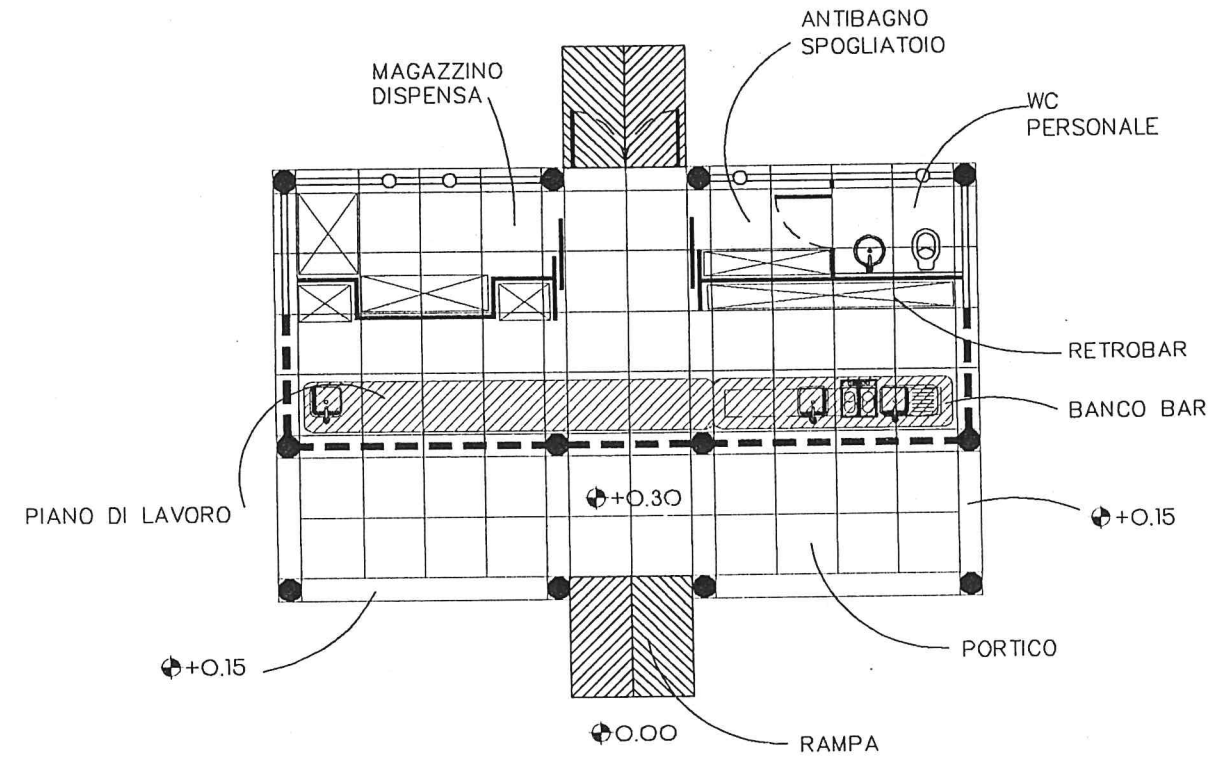


CHIOSCO BAR 1

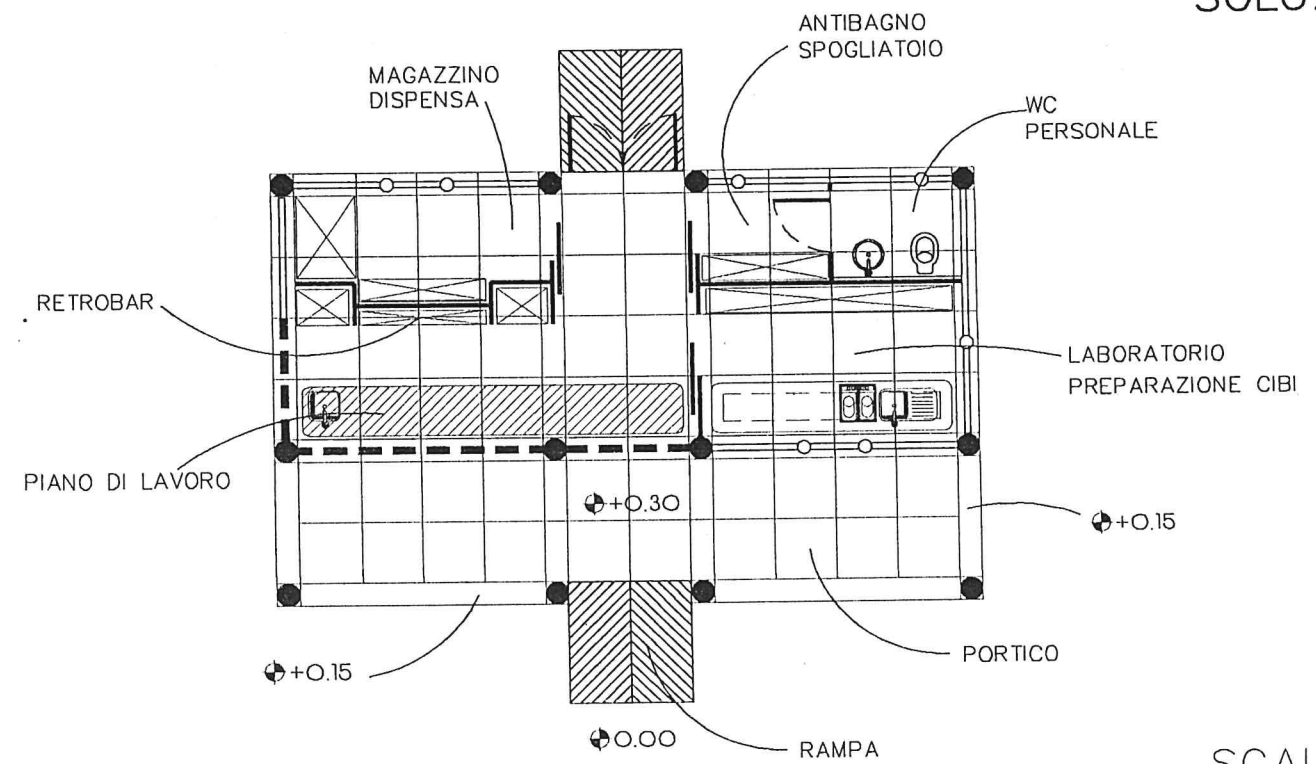
SOLUZIONE 1



SOLUZIONE 2

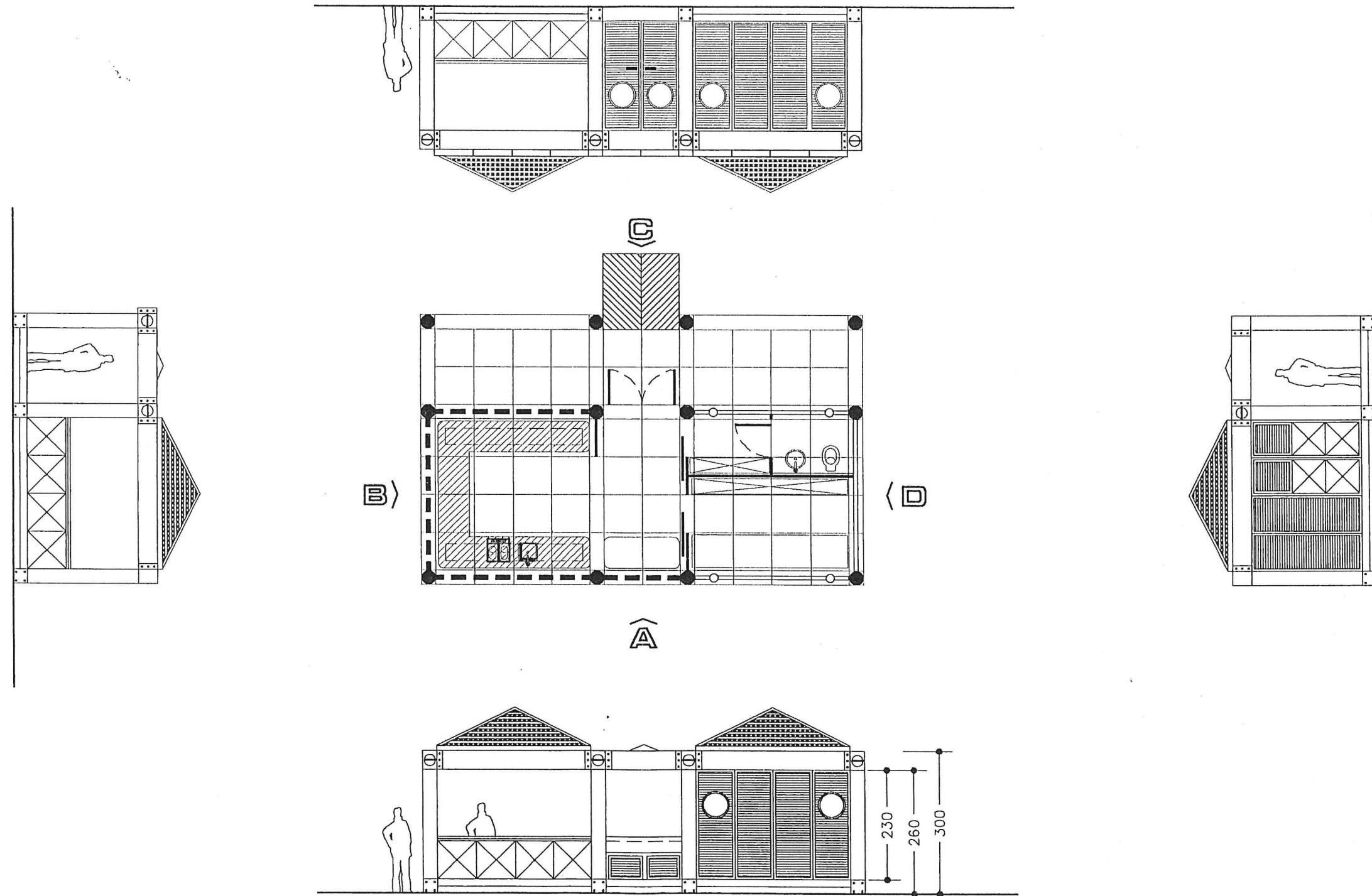


SOLUZIONE 3



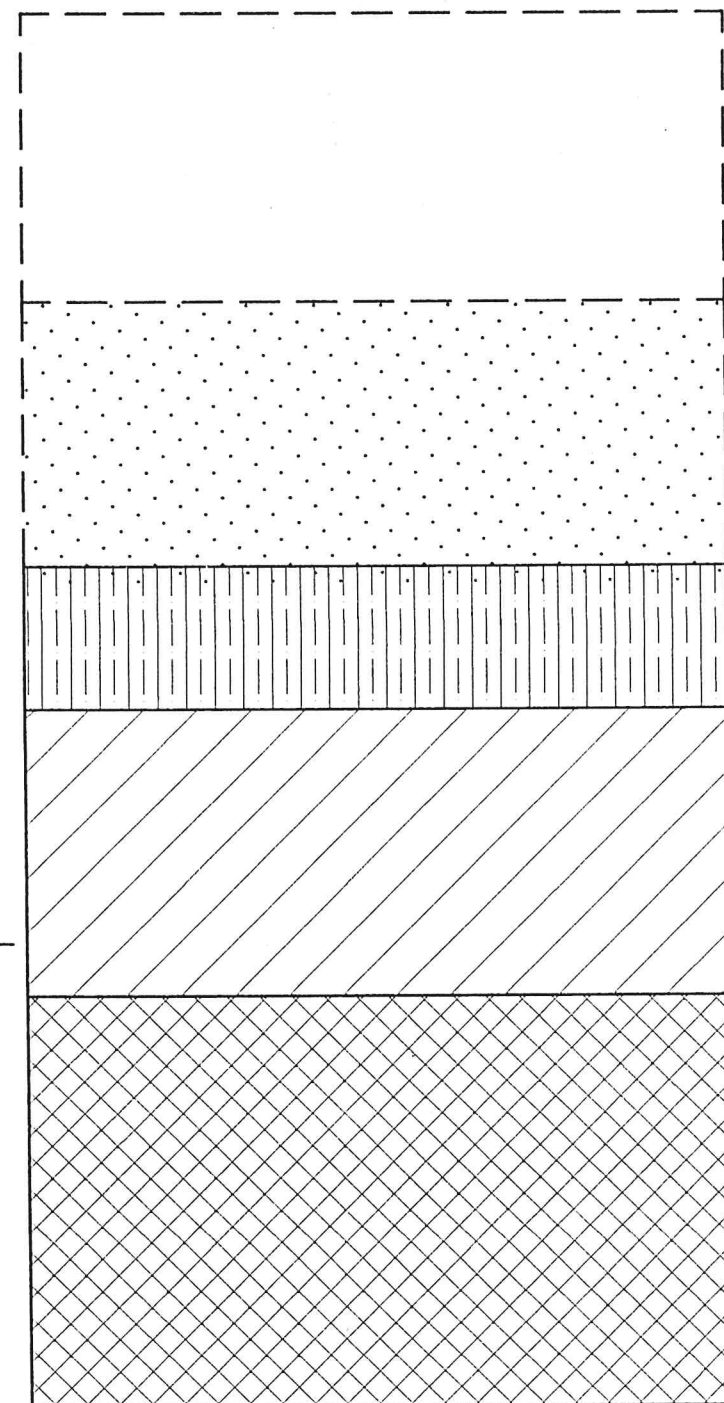
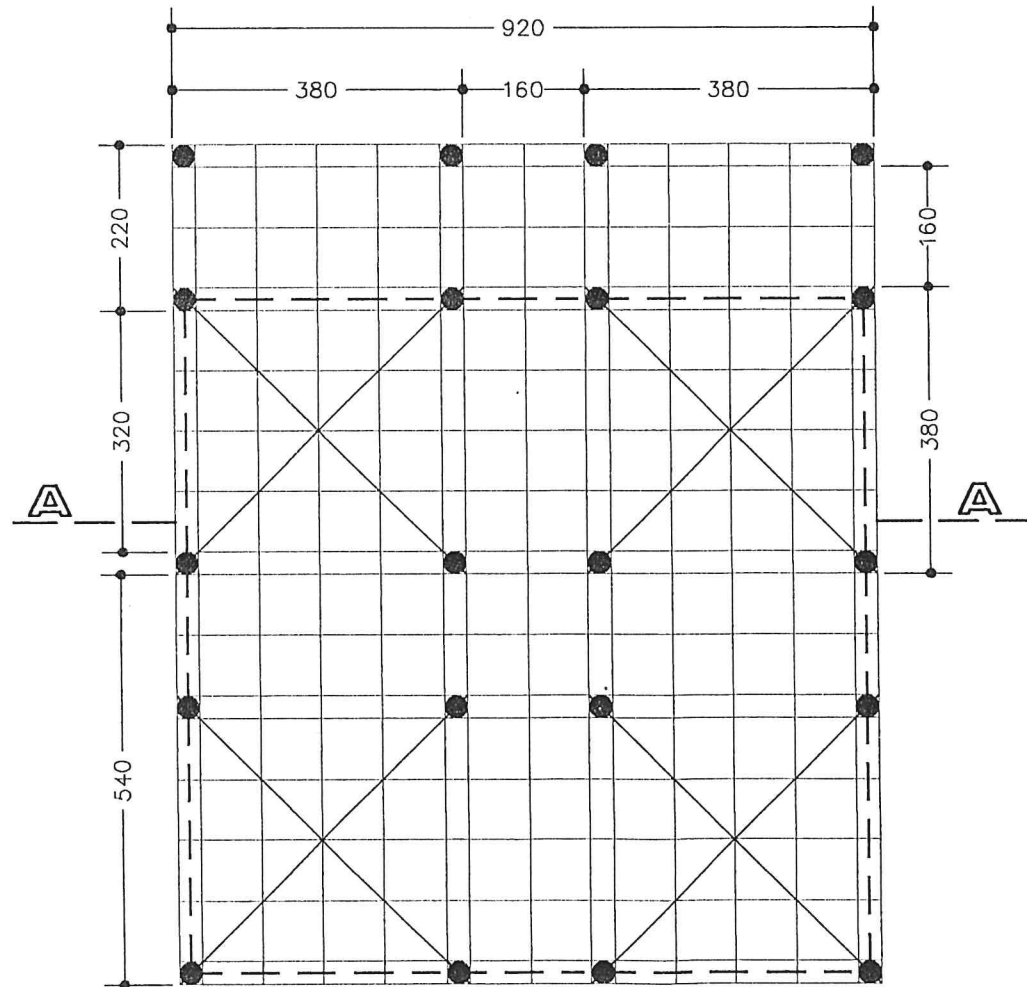
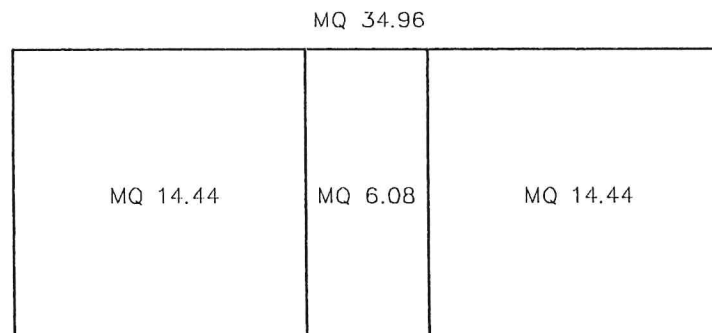
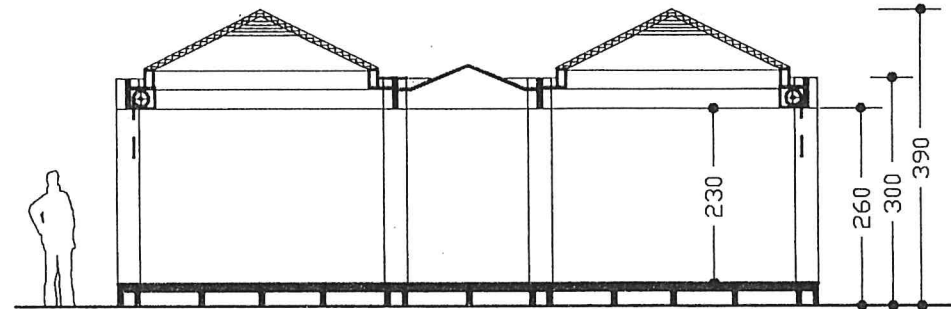
SCALA 1:100

CHIOSCO BAR 1 - PROSPETTI



CHIOSCO BAR 2

SA		SUPERFICIE APERTA TAVOLI E OMBRELLONI DA MQ 34.96 A MQ 69.92
SP		SUPERFICIE A PORTICO
SMO		SUPERFICIE MODULO OPERATIVO
SS		SUPERFICIE COPERTA E CHIUSA SALA



SA MQ 34.96

SP MQ 17.48

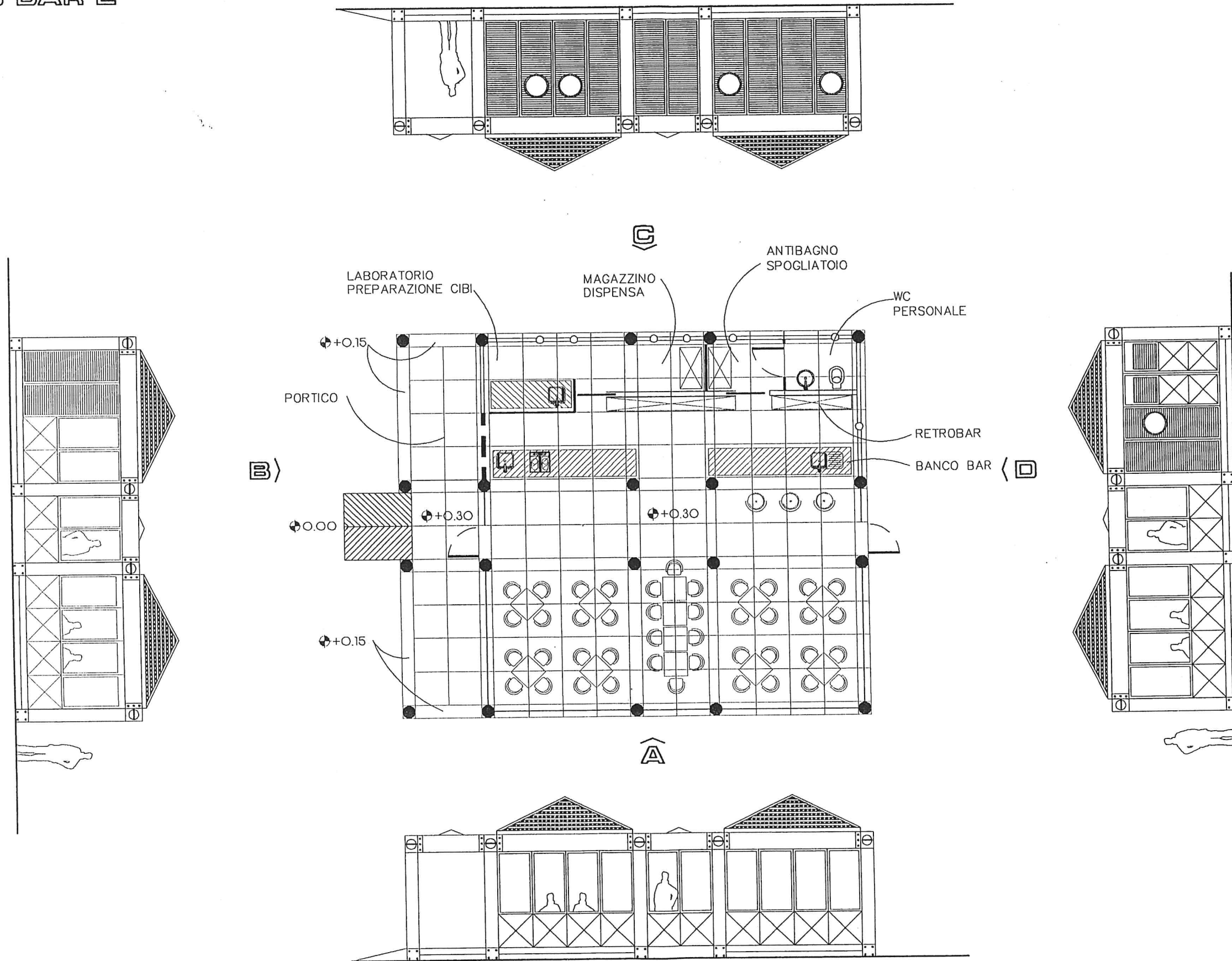
SMO MQ 34.96

SS MQ 49.68

SCALA 1:100





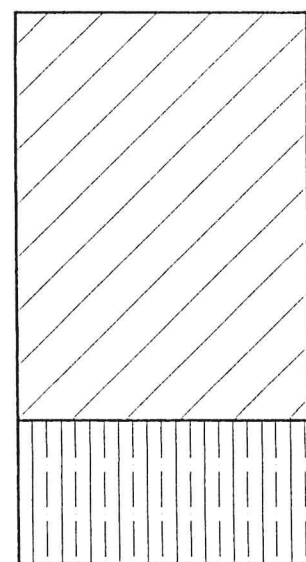
CHIOSCO BAR 2



SCALA 1:100

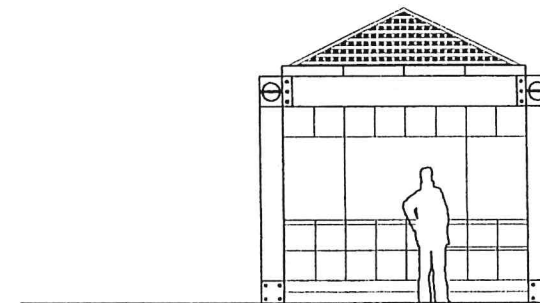
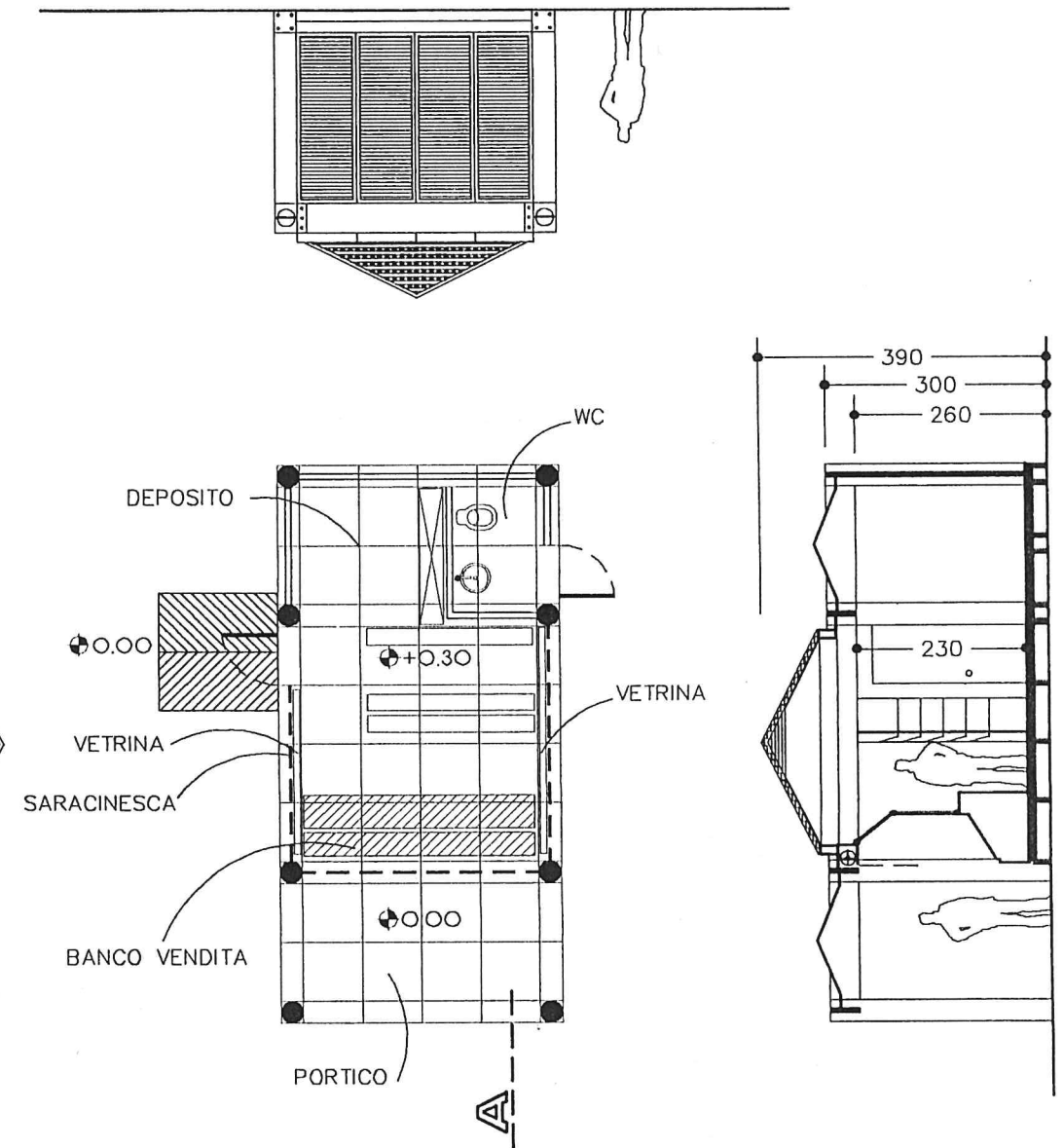
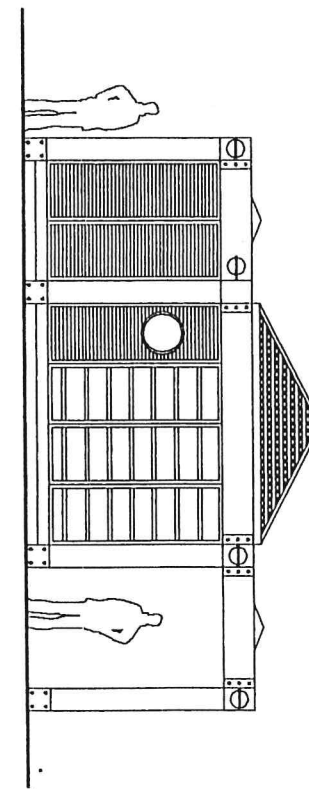
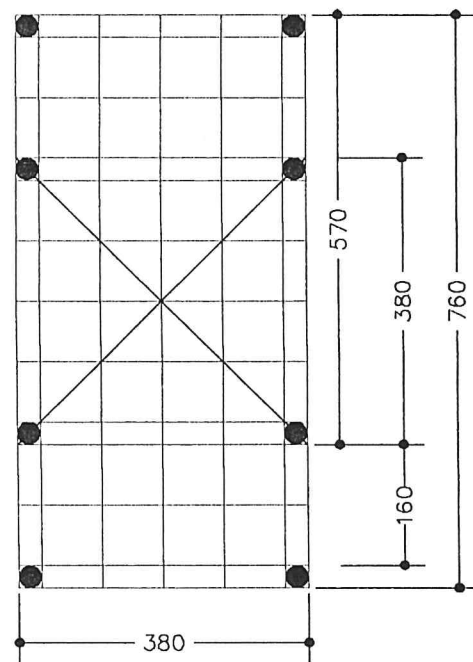
CHIOSCO GIORNALI

SP		SUPERFICIE A PORTICO PER ESPOSITORI
SMO		SUPERFICIE MODULO OPERATIVO



SMO MQ 21.66

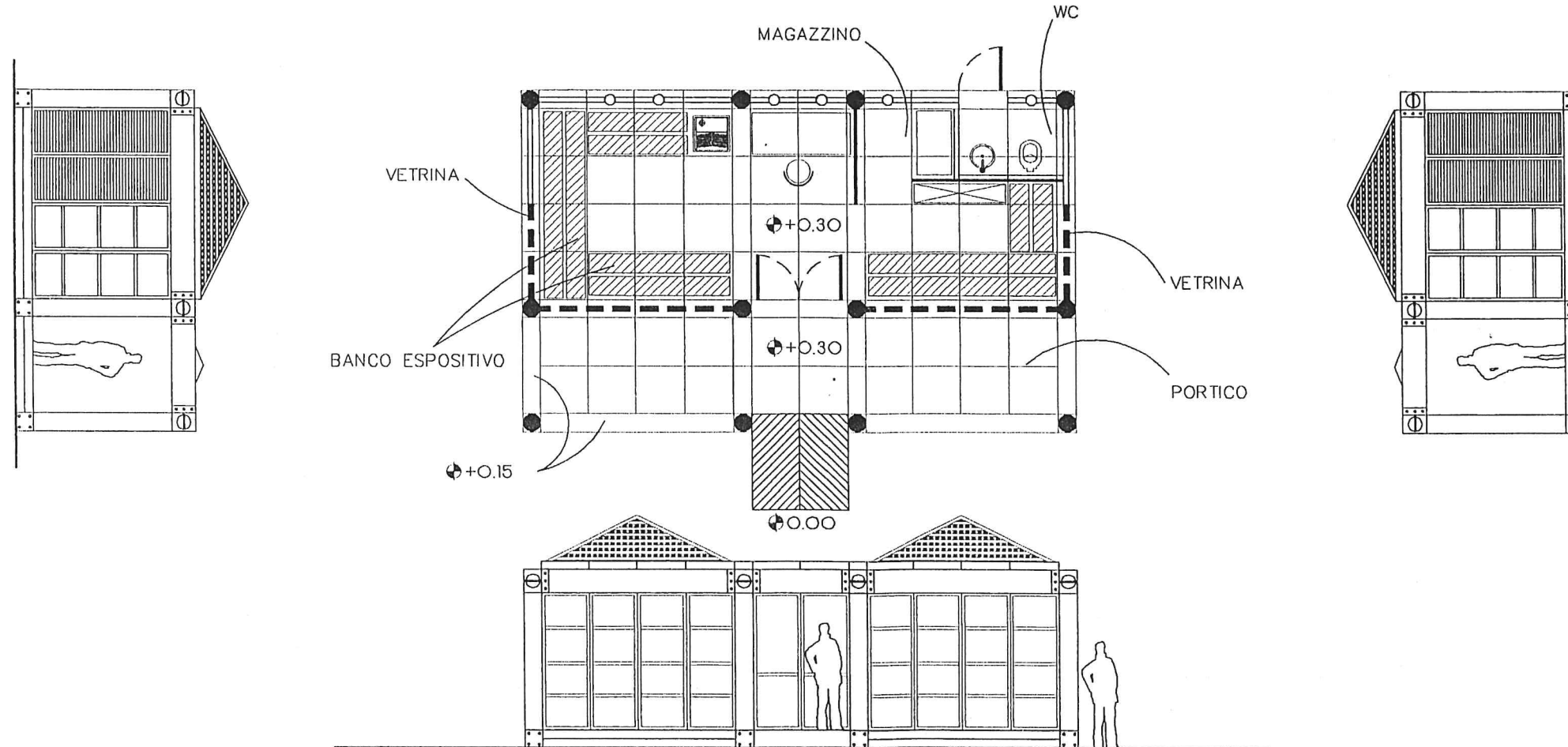
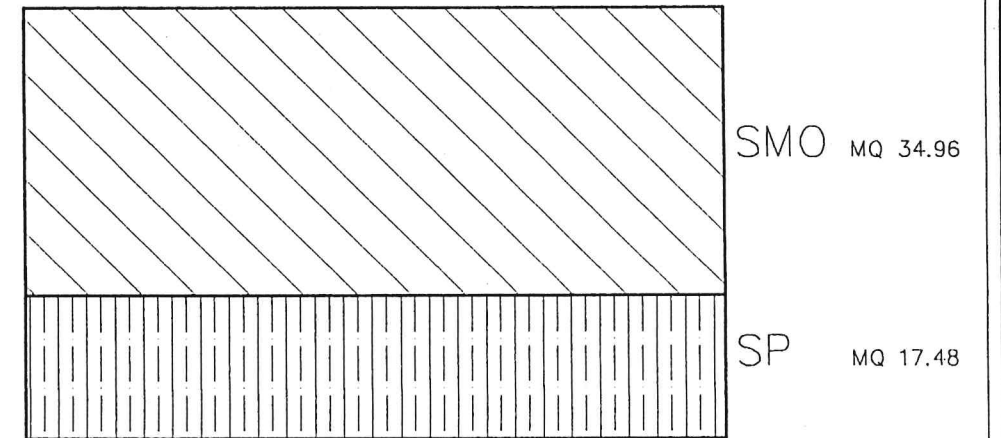
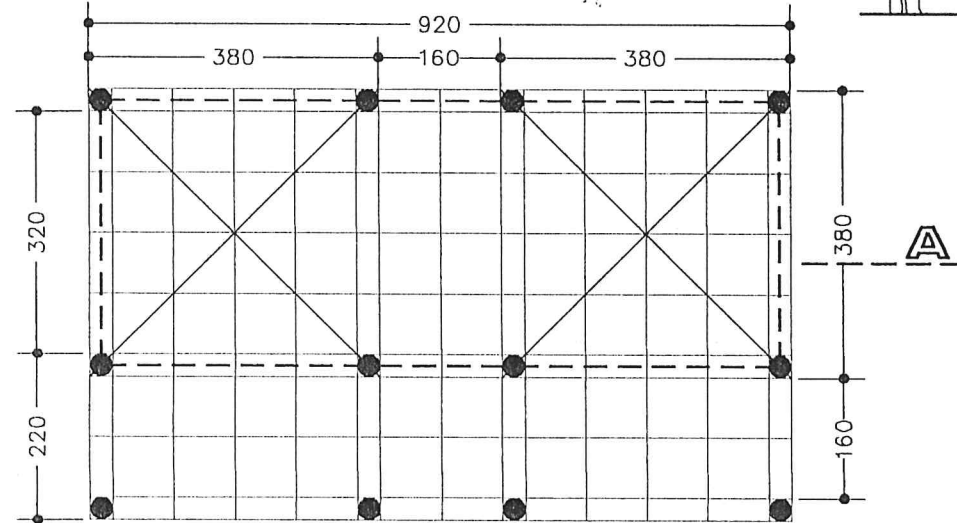
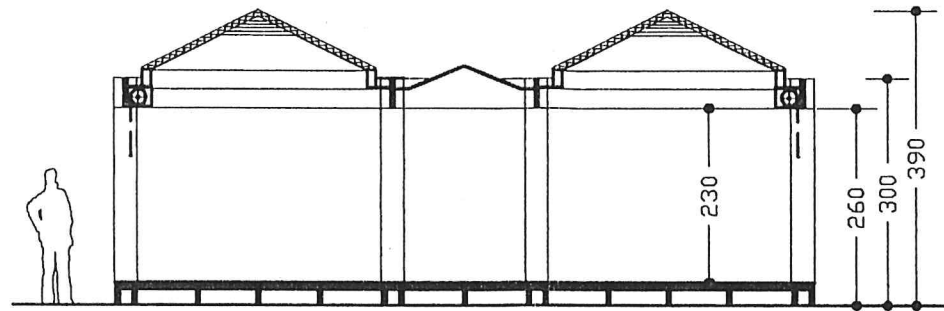
SP MQ 7.22



SCALA 1:100

CHIOSCO FIORI

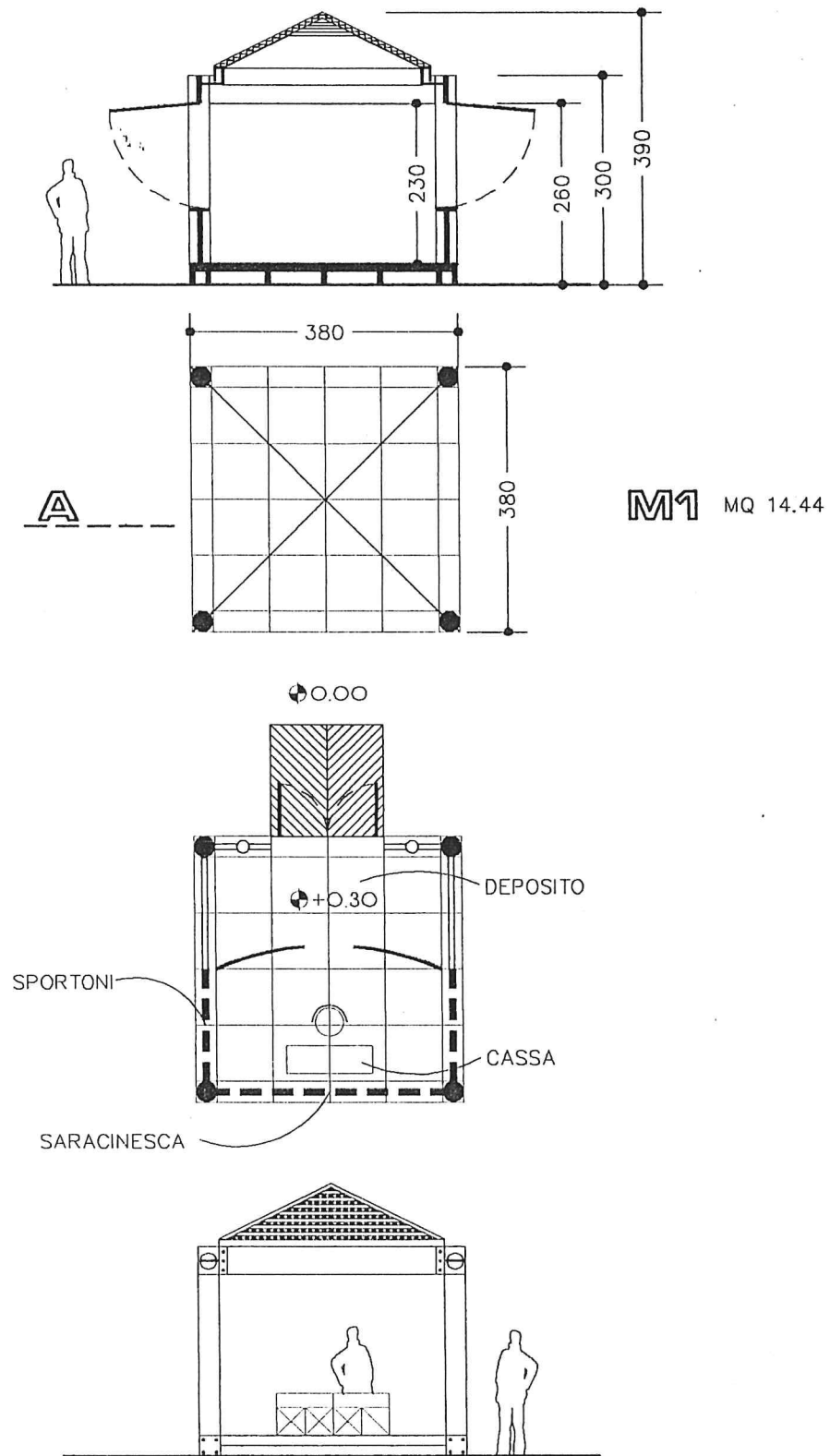
SP		SUPERFICIE A PORTICO PER ESPOSITORI
SMO		SUPERFICIE MODULO OPERATIVO MQ 34.96



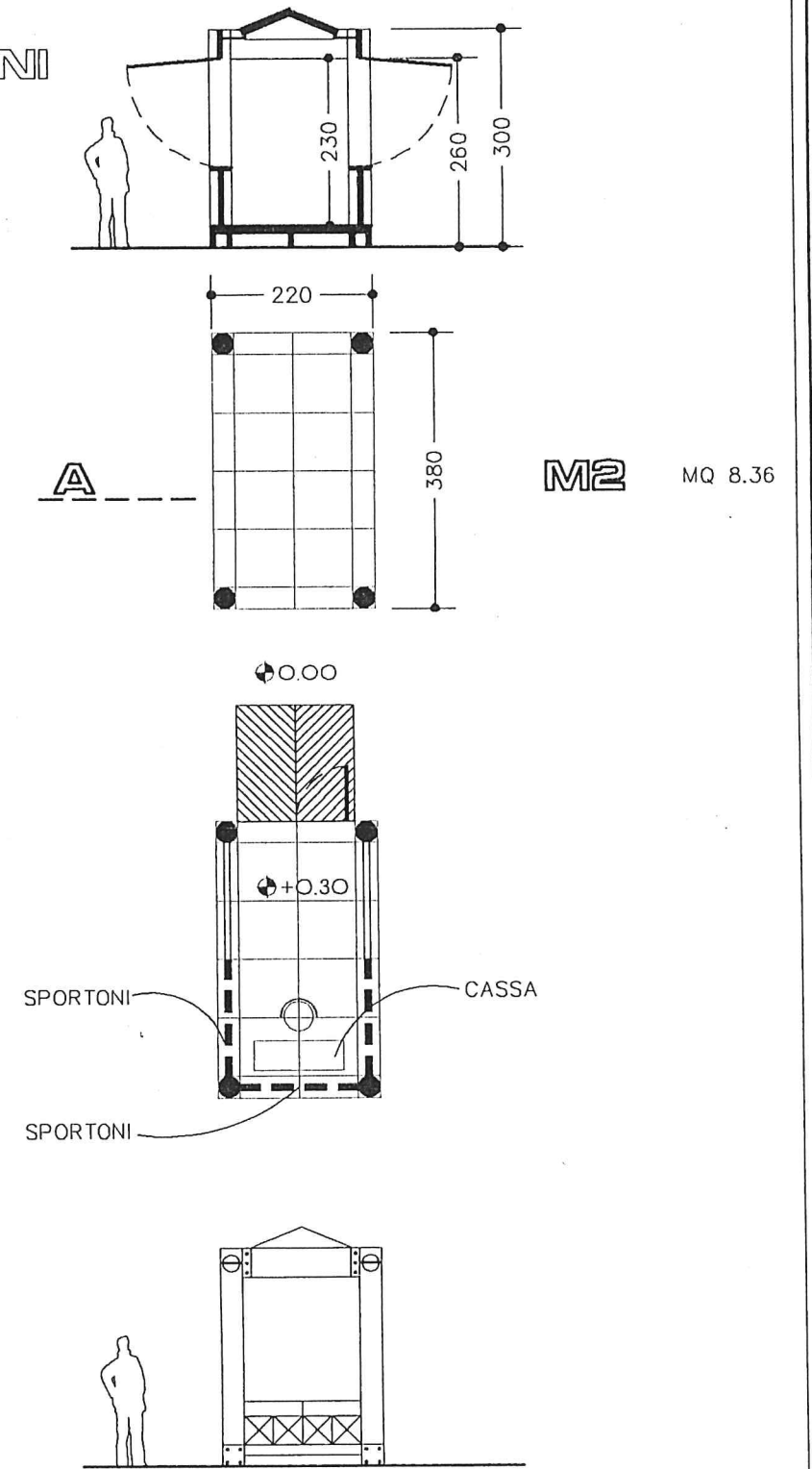
SCALA 1:100



CHIOSCO TAPPETI ELASTICI  
CHIOSCO CAVALLINI



CHIOSCO GO KART  
CHIOSCO TRENINO  
CHIOSCO GIOSTRE  
CHIOSCO BURATTINI



SCALA 1:100

NOLEGGIO CICLI ( M1-CASSA + M4 CONTAINER BICI )

SOLUZIONE 1

SUPERFICIE TOTALE  
MQ 141.36

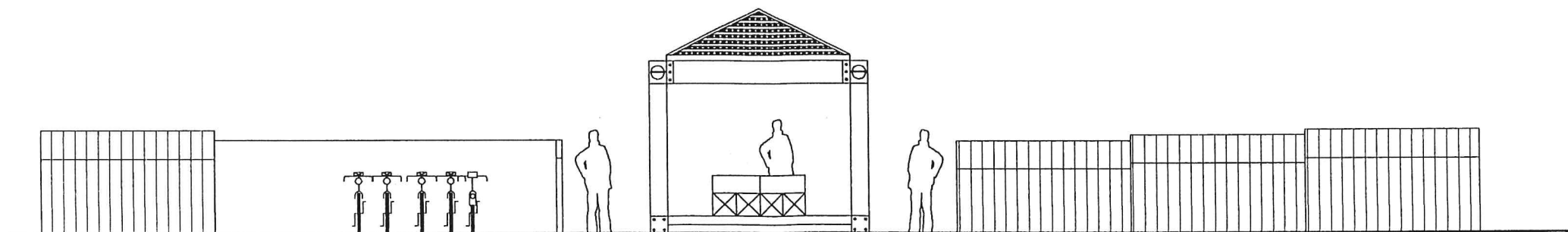
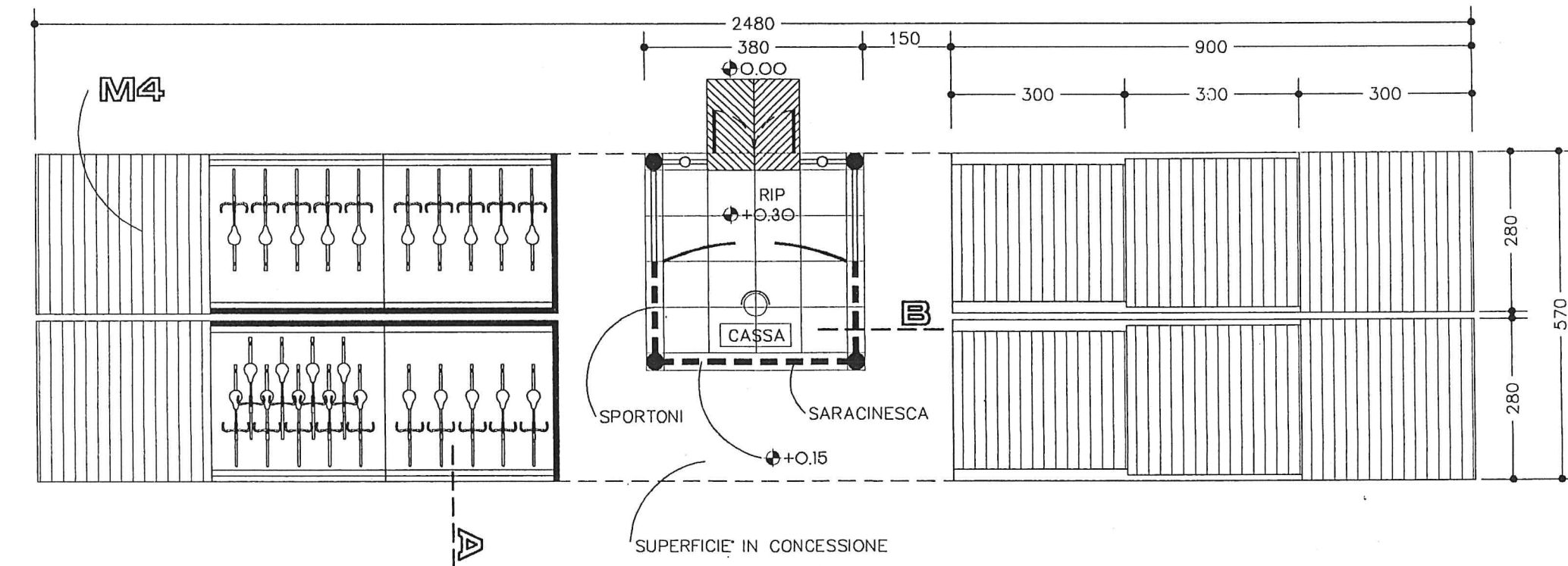
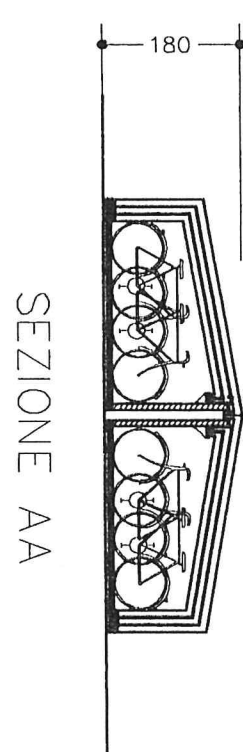
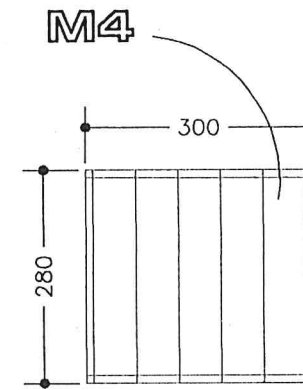
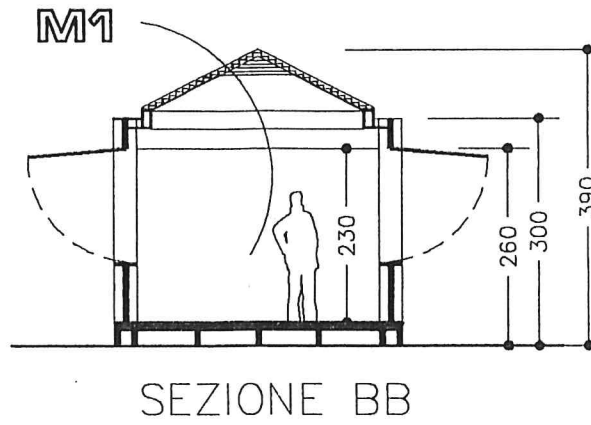
SUPERFICIE COPERTA  
1 MODULO M1 = MQ 14.44

SUPERFICIE COPERTA  
1 MODULO M4 = MQ 8.40

12 MODULO M4 = MQ 100.80

CASSA

RICOVERO CICLI



NOLEGGIO CICLI ( M1-CASSA + M4 CONTAINER BICI )

SOLUZIONE 2

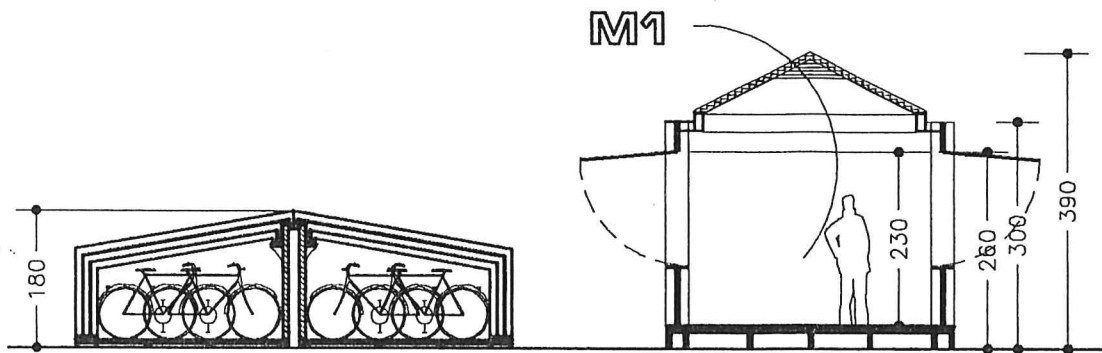
SUPERFICIE TOTALE  
MQ 171

SUPERFICIE COPERTA  
1 MODULO M1 = MQ 14.44

SUPERFICIE COPERTA  
1 MODULO M4 = MQ 8.40  
12 MODULO M4 = MQ 100.80

CASSA

RICOVERO CICLI



180

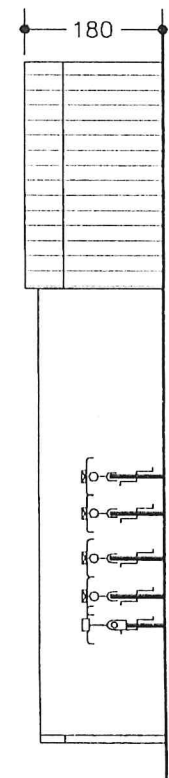
M1

M4

300

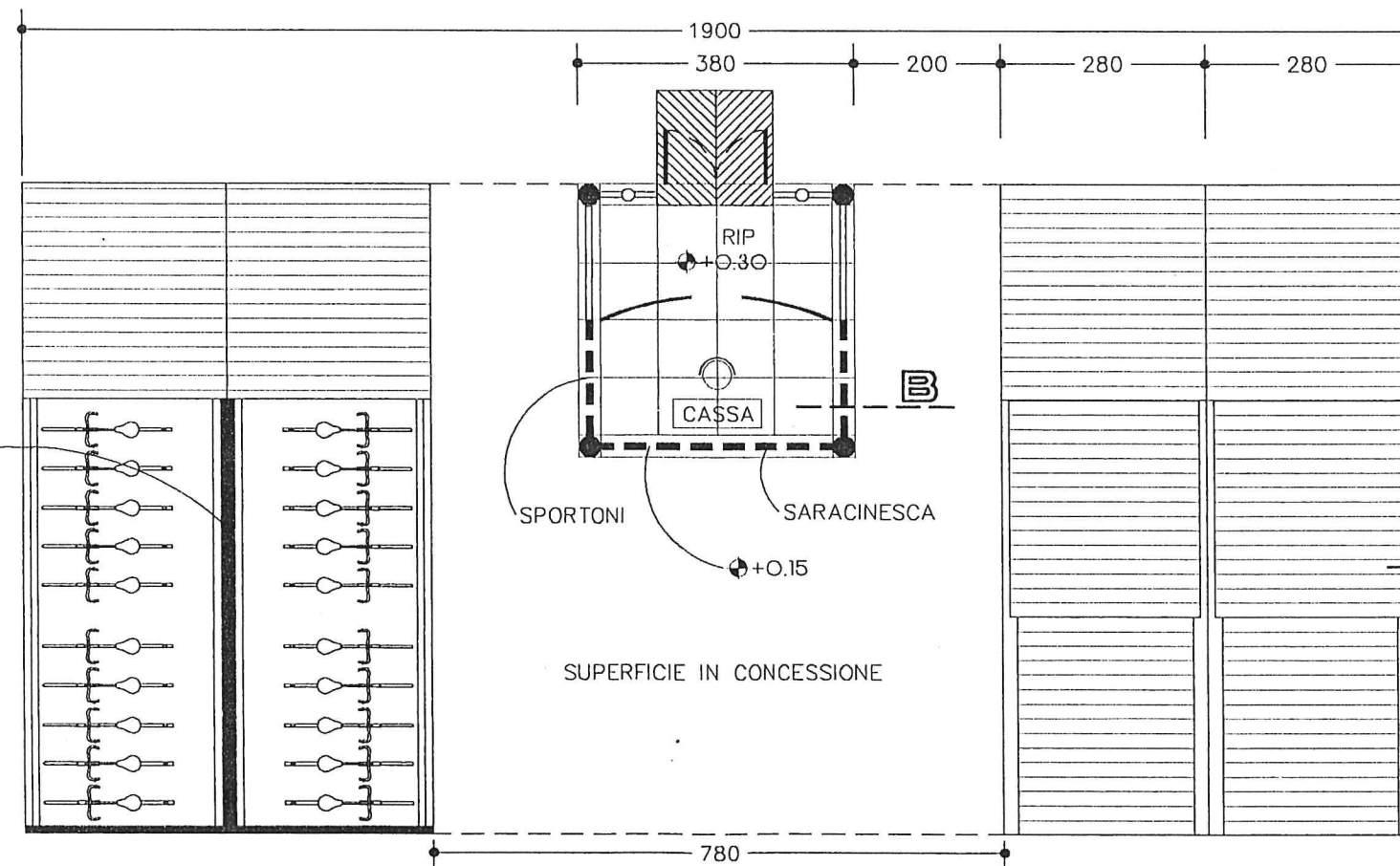
280

SEZIONE BB



SEZIONE AA

PARETE FISSA



1900

380

200

280

280

RIP

+0.30

CASSA

SPORTONI

SARACINESCA

+0.15

SUPERFICIE IN CONCESSIONE

780

300

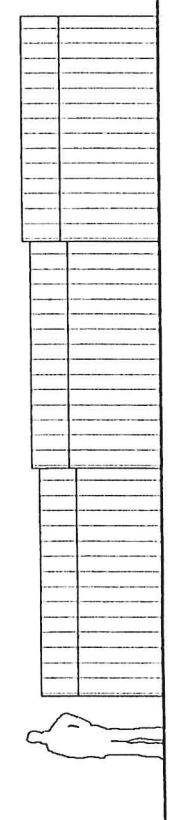
300

300

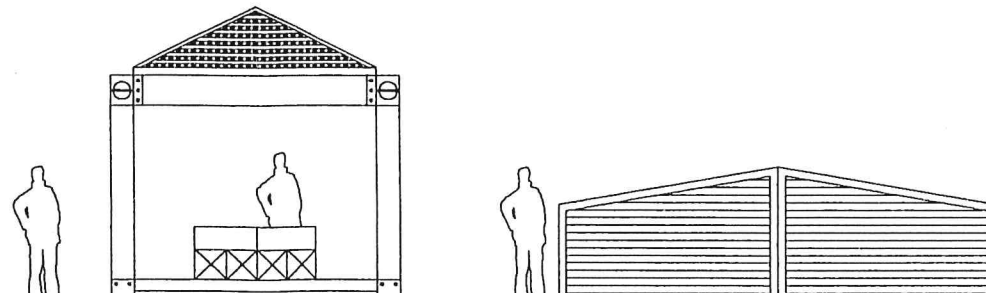
300

900

A



PROSPETTO



SCALA 1:100

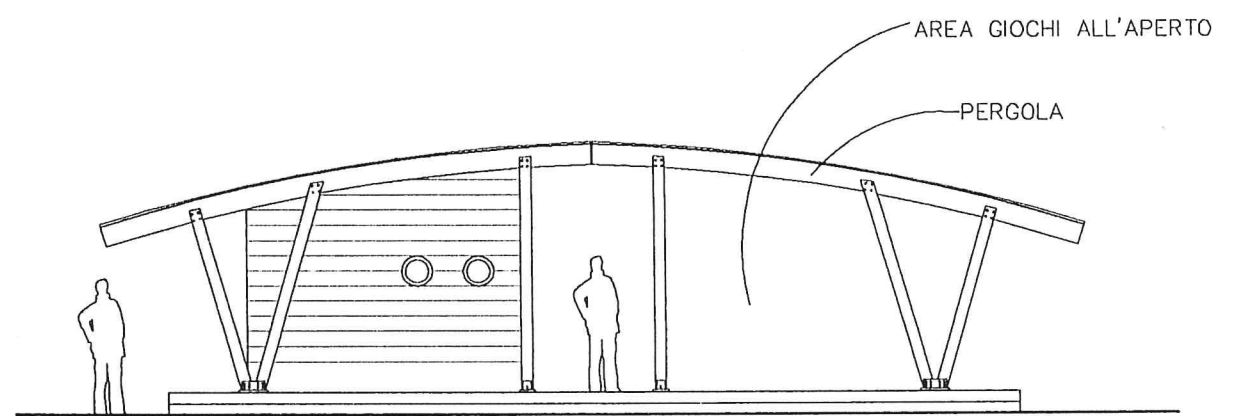
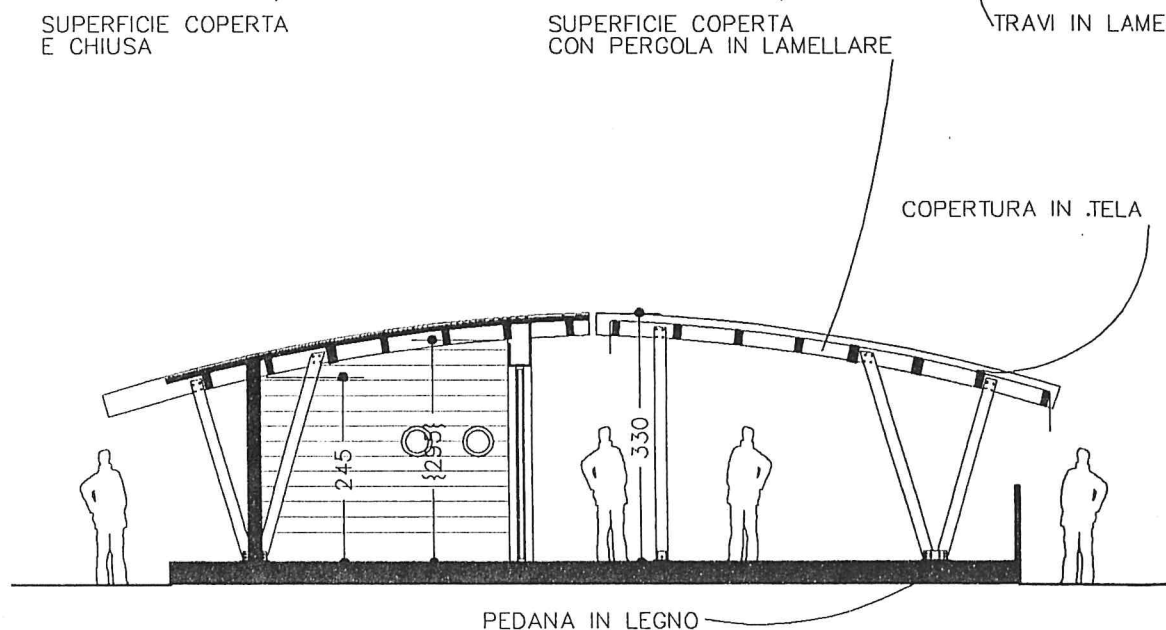
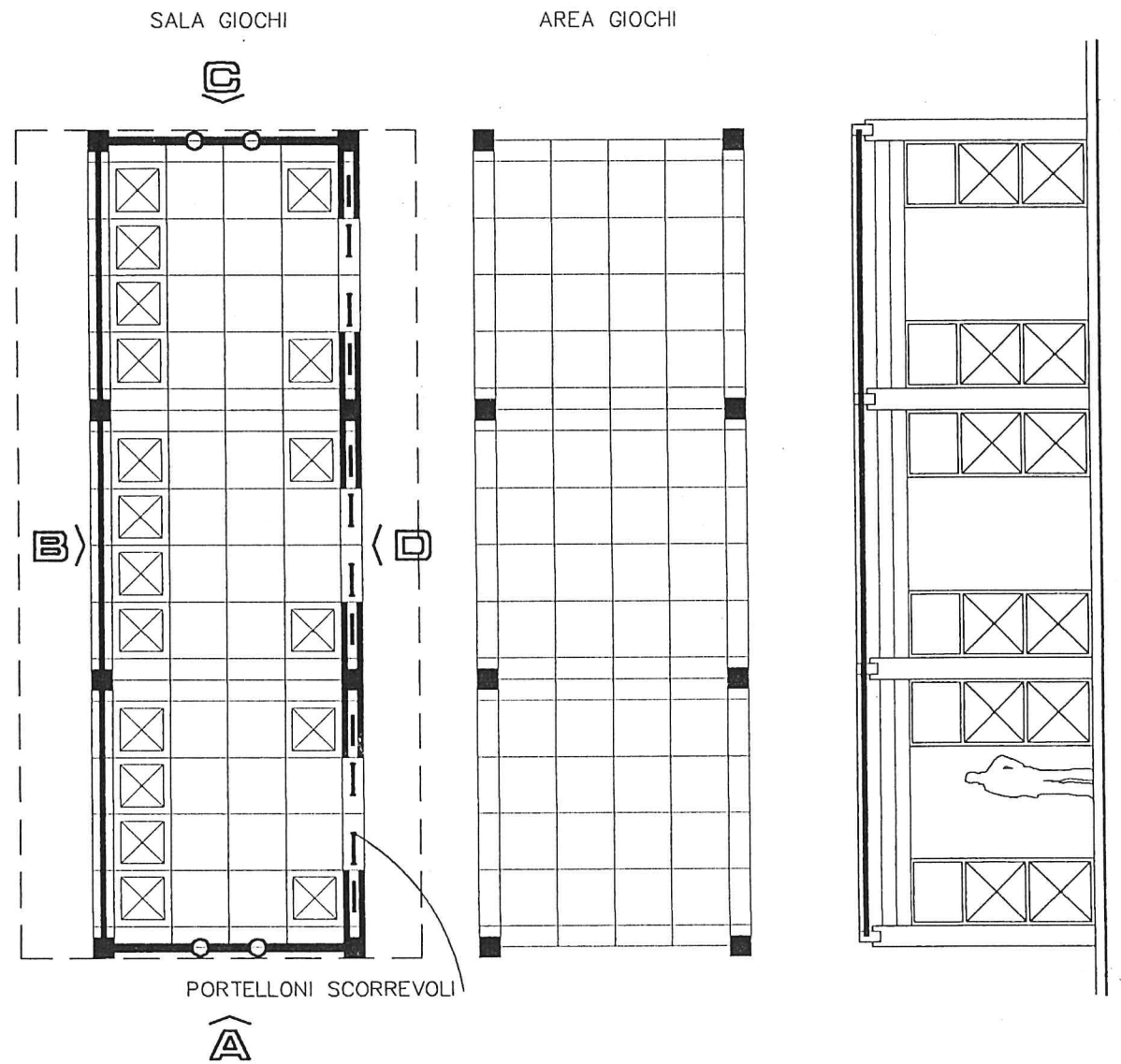
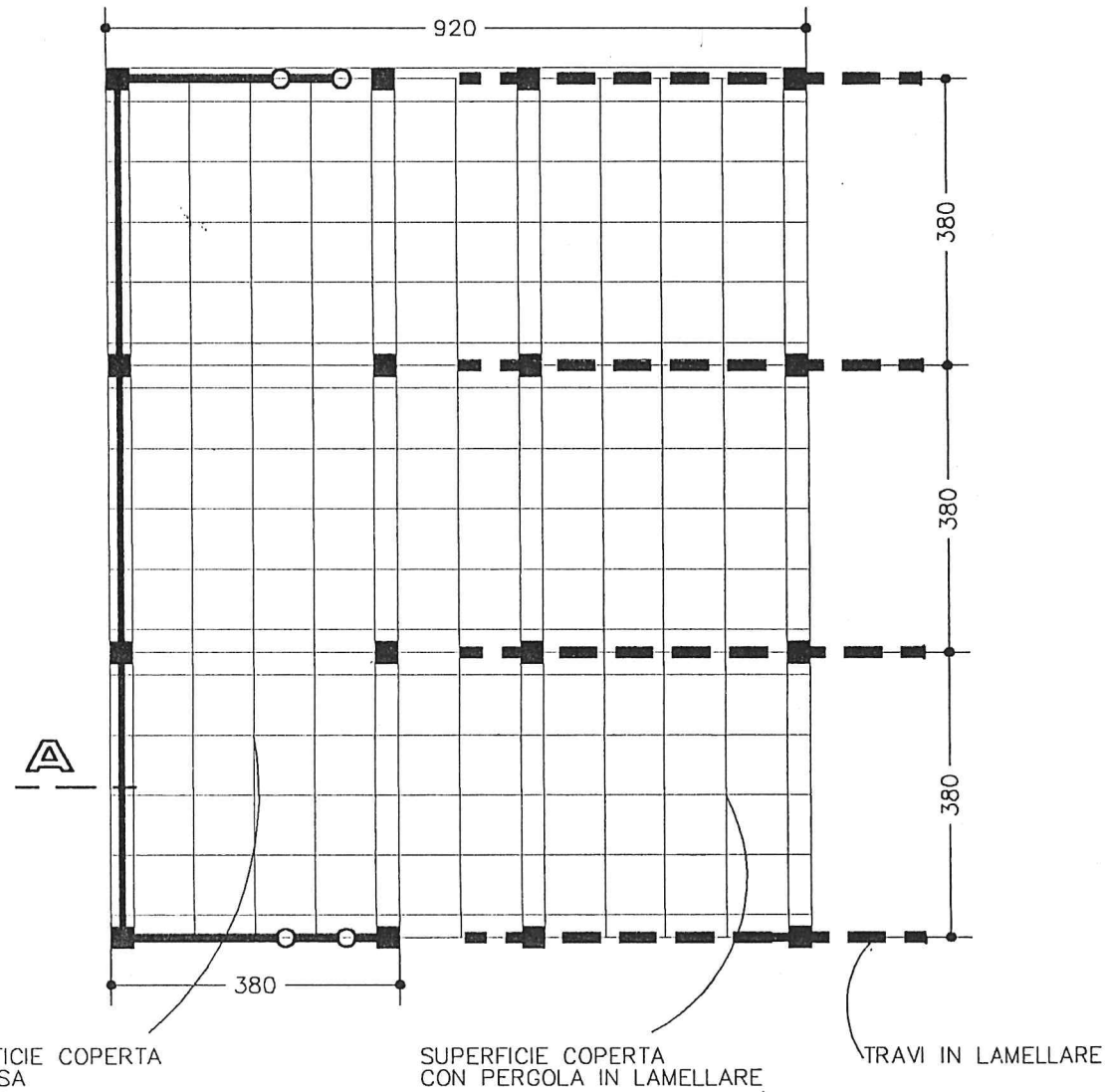
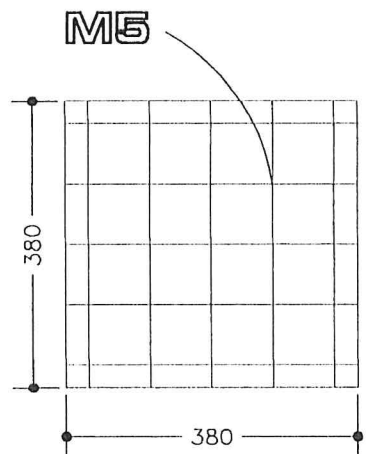


SALA GIOCHI

SUPERFICIE TOTALE  
MQ 104.88

SUPERFICIE MODULO M5  
MQ 14.44

SUPERFICIE COPERTA-CHIUSA  
N.3 MODULI M5 (MAX)  
MQ 43.32



SEZIONE AA

PROSPETTO A

SCALA 1:100